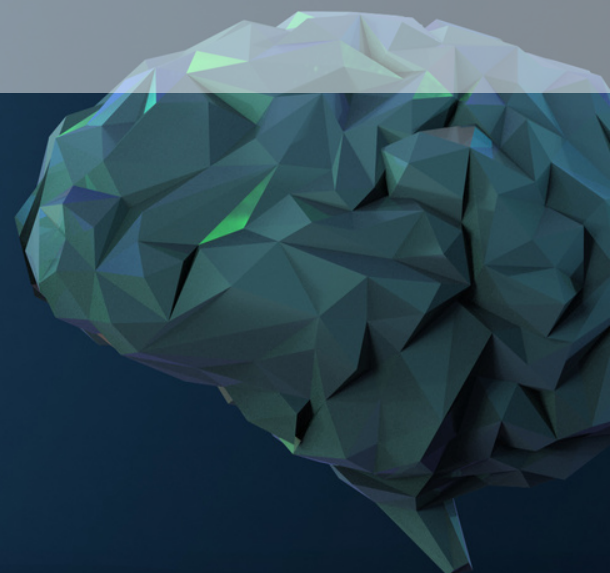
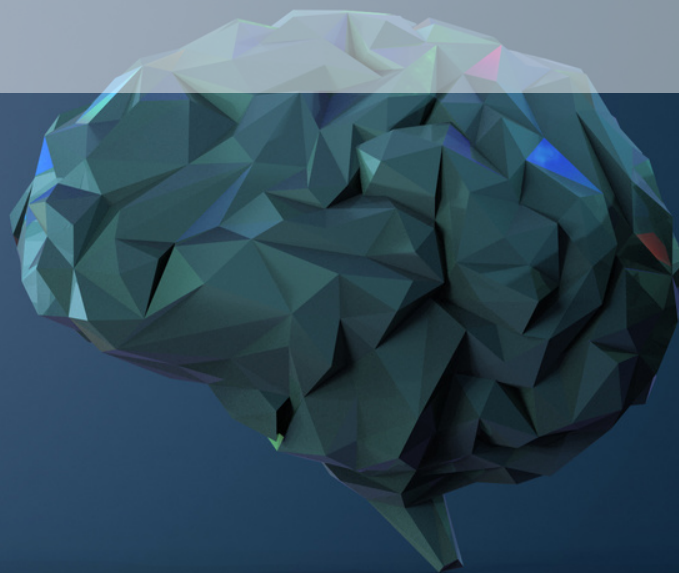
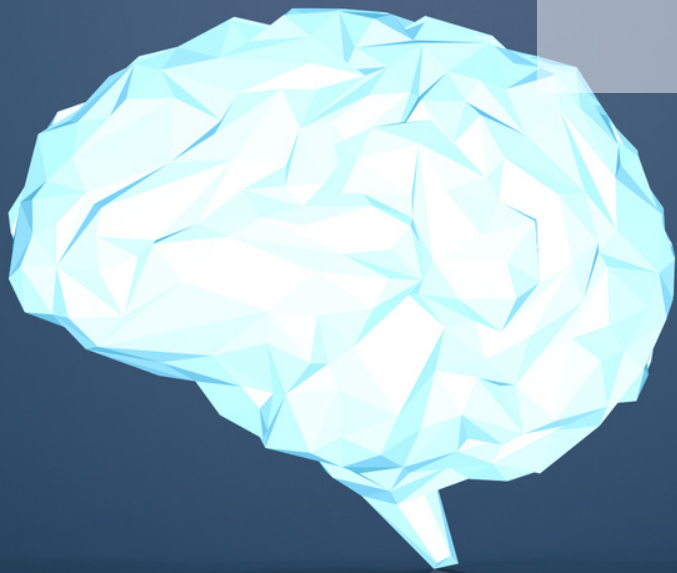


BRAINWAVE STIMULATION



Individuals experiencing cognitive decline encounter challenges in accessing the fast brainwave rhythm, which plays a vital role in thinking and processing information. Many of these individuals not only demonstrate diminished brainwave activity during rest but also struggle to synchronize frontal brain activity when engaged in cognitive tasks. To assist such patients, PISTA aims to induce optimal brainwave levels, enhancing mental processing, cognitive functions, and problem-solving abilities in the face of cognitive decline.

The PISTA technique operates on the principle that when the brain is exposed to two tones with slightly different frequencies, it perceives a beat that matches the frequency difference.

In addition to its primary mechanism, PISTA also investigates functional brain connectivity to understand how brain synchronization is influenced by this stimulation. The study aims to observe noticeable improvements in the EEG signals of patients with cognitive decline through the continuous application of Binaural beats at a specific frequency over a period of time.